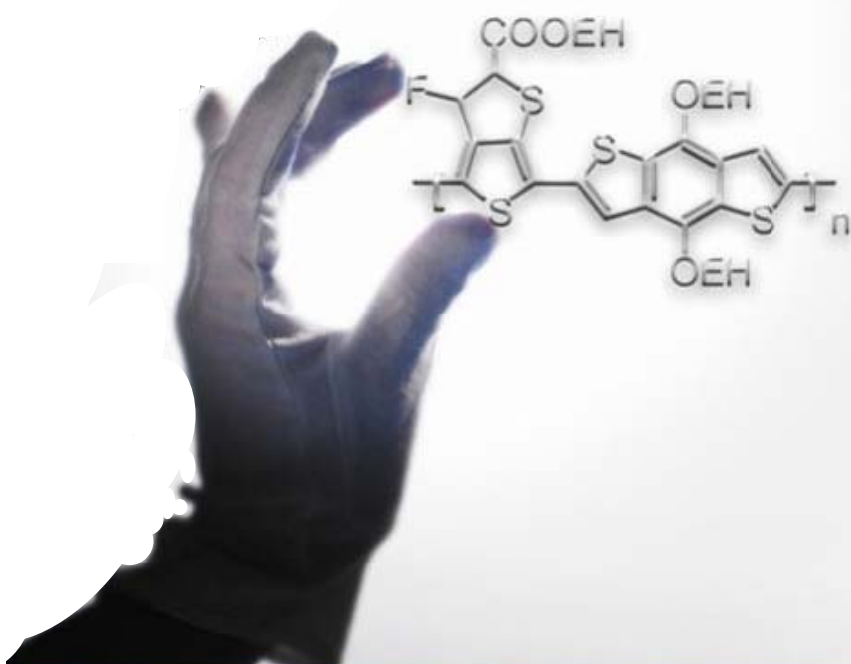




Xi'an Polymer Light Technology Corp.

Supplier of Organic Optoelectronic Materials
Developer of OLED & OPV Technology



Web: www.p-oled.cn E-mail: info@p-oled.cn Fax: +86-29-8616-8606 Tel: +86-29-8616-8626

Table of Contents

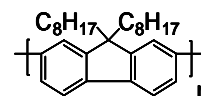
Organic Optoelectronic Materials

1、 Polymer Optoelectronic Materials	2
PFO / PFO(DMP end capped) /PVK/ PCz	2
MEH-PPV / MEH-PPV / MDMO-PPV / F8BT	3
PFB / TFB / PFOPV / PFOBPA	4
Bu-PPP/ SY-PPV	5
2、 TADF Materials	6
2CzPN / 4CzPN / 4CzIPN / 4CzTPN.....	6
4CzTPN-Ph / 4CzTPN-Bu / 4CzPN-Ph / 4CzPN-Bu	7
DMAC-DPS.....	8
3、 Organic Fluorescent Materials	9
Alq3 / TBCPF / CBP / mCP.....	9
26DCzPPY.....	10
4、 Organic Photovoltaic Materials	11
P3HT / PC61BM / PC71BM / PTB7	11
C60 / C70	12
5、 Perovskite Materials	13
CH ₃ NH ₃ I (MAI) / CH ₃ NH ₃ Cl(MACl) / CH ₃ NH ₃ Br(MABr) / PbI ₂	13
PbCl ₂ / PbBr ₂ / CH ₃ NH ₃ PbI ₃ / TBP	14
CH ₃ NH ₃ PbBr ₃ / HC(NH ₂) ₂ I(FAI) / HC(NH ₂) ₂ Cl(FACl) / HC(NH ₂) ₂ Br(FABr)	15
FAPbI ₃ / FAPbBr ₃ /LiTFSI / TiO ₂ Paste 浆料进口	16
P3HT / Spiro-OMeTAD / PTAA / PTA-EDOT (H101)	17
Poly-TPD / MAPbI ₂ Cl / MAPbICl ₂ / MAPbI ₃	18
PAPbI ₃ / BA2PbI ₄ / PMA2PbI ₄ / PEA2PbI ₄	19
EAPbBr ₃ / PAPbBr ₃ / BA2PbBr ₄ / PMA2PbBr ₄	20
PEA2PbBr ₄ / CsPbCl ₃ / CsPbBr ₃ / CsPbI ₃	21
EAI / PAI / BAI / PMAI.....	22
PEAI / EABr / PABr / BABr.....	23
PMABr / PEABr / CsI / CsBr.....	24
CsCl / OABr / CH ₃ (CH ₂) ₁₁ NH ₃ Br / 油胺溴.....	25
6、 Organic Phosphorescent Materials	26
FIrPic / PhFIrPic / FCNIrPic / Ir(ppy) ₂ (acac)	26
Ir(ppy) ₃ / Ir(mppy) ₃ / Ir(pbi) ₂ (acac) / Ir(bt) ₂ (acac)	27
Ir(bt) ₃ / Ir(piq) ₂ (acac) / Ir(piq) ₃ / Ir(hpiq) ₃	28
7、 Transport Materials	29
Butyl-PBD / OXD-7 / TPD / TPBi	29
BCP / Bphen / NPB / TmTPA	30
TCTA / TAPC / TAA / B2PyMPM	31
B3PyMPM / B4PyMPM / LiBPP / Liq /.....	32
PEDOT:PSS.....	33
8、 Special Material	34
CPS	34

1. Polymer Optoelectronic Materials (聚合物光电材料)

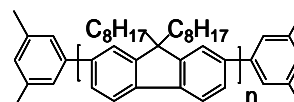
PLT101011B Poly(9,9-di-n-octylfluorenyl-2,7-diyl)

PFO	CAS # 195456-48-5	Blue Emitter	Yellow Fiber or Flake
LUMO	~2.7eV		
HOMO	~5.8eV		
Linear Formula	(C ₂₉ H ₄₀) _n		
Mw	30,000~65,000 by GPC		
Mn	15,000~25,000 by GPC		
λ _{Abs.}	386 nm in THF		
λ _{PL}	417 nm and 440 nm in THF		



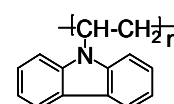
PLT101021B Poly(9,9-dioctylfluorenyl-2,7-diyl) end capped with dimethylphenyl

PFO(DMP end capped)	CAS # 195456-48-5	Blue Emitter	Yellow Fiber or Flake
LUMO			
HOMO			
Linear Formula	(C ₂₉ H ₄₀) _n		
Mw	30,000~60,000 by GPC		
Mn	20,000~40,000 by GPC		
λ _{Abs.}			
λ _{PL}			



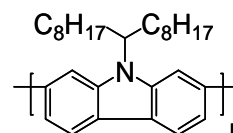
PLT102011B Poly(9-vinylcarbazole)

PVK	CAS # 25067-59-8	Blue Emitter	White fiber or flake
LUMO	~2.2eV		
HOMO	~5.8eV		
Linear Formula	(C ₁₄ H ₁₁ N) _n		
Mw	500,000~600,000 by GPC		
Mn	150,000~200,000 by GPC		
λ _{Abs.}	298 nm, 330nm and 344 nm in THF		
λ _{PL}	375 nm in THF		



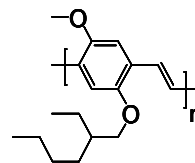
PLT102021B Poly[N-(1-octylnonyl)-9H-carbazole-2,7-diyl]

PCz	CAS # 1093292-01-3	Blue Emitter	Pale Yellow fiber or flake
LUMO			
HOMO			
Linear Formula	(C ₅₃ H ₅₈ N ₂) _n		
Mw	20,000~25,000 by GPC		
Mn	10,000~15,000 by GPC		
λ _{Abs.}	378 nm in THF		
λ _{PL}	418 and 437 nm in THF		

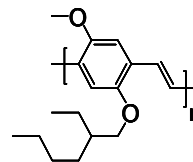


PLT103012R
Poly[2-methoxy-5-(2-ethylhexyloxy) phenylenevinylene-1,4-diyl]

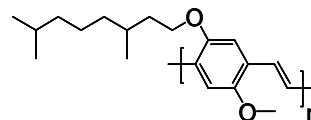
MEH-PPV	CAS # 138184-36-8	Red Emitter	Red fiber or flake
LUMO	~2.1eV		
HOMO	~5.3eV		
Linear Formula	(C ₁₇ H ₂₄ O ₂) _n		
Mw	150,000~400,000 by GPC		
Mn	60,000~100,000 by GPC		
λ _{Abs.}	492 nm in THF		
λ _{PL}	557 nm and 594 nm in THF		


PLT103011R
Poly[2-methoxy-5-(2-ethylhexyloxy) phenylenevinylene-1,4-diyl]

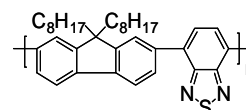
MEH-PPV	CAS # 138184-36-8	Red Emitter	Red fiber or flake
LUMO	~2.1eV		
HOMO	~5.3eV		
Linear Formula	(C ₁₇ H ₂₄ O ₂) _n		
Mw	100,000~150,000 by GPC		
Mn	40,000~60,000 by GPC		
λ _{Abs.}	492 nm in THF		
λ _{PL}	557 nm and 594 nm in THF		


PLT103031R
Poly[2-methoxy-5-(3,7-dimethyloctyloxy) phenylenevinylene-1,4-diyl]

MDMO-PPV	CAS # 177716-59-5	Red Emitter	Red fiber or flake
LUMO			
HOMO			
Linear Formula	(C ₁₉ H ₂₈ O ₂) _n		
Mw	100,000~500,000 by GPC		
Mn	50,000~200,000 by GPC		
λ _{Abs.}	501 nm in THF		
λ _{PL}	551 nm and 593 nm in THF		

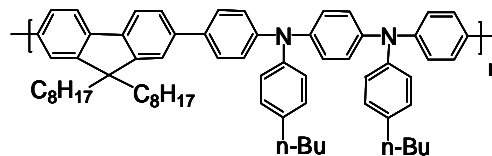

PLT105011Y
Poly[(9,9-di-n-octylfluorenyl-2,7-diyl)-alt-(benzo[2,1,3]thiadiazol-4,8-diyl)]

F8BT	CAS # 210347-52-7	Yellow Emitter	Yellow to Dark Orange Powder
LUMO	~3.5eV		
HOMO	~5.9eV		
Linear Formula	(C ₃₅ H ₄₂ N ₂ S) _n		
Mw	60,000~100,000 by GPC		
Mn	30,000~50,000 by GPC		
λ _{Abs.}	320nm, 334nm and 456 nm in THF		
λ _{PL}	558 nm in THF		

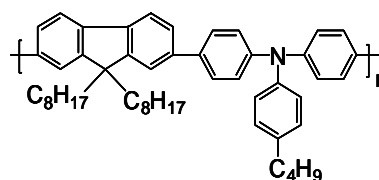


PLT105021G Poly[(N,N'-bis(4-butylphenyl)-N,N'-diphenyl-1,4-benzenediamine)-alt-(9,9-dioctylfluorene-2,7-diyl)]

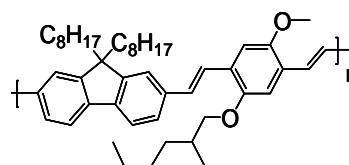
PFB	CAS # 223569-28-6	Green Emitter	Pale Yellow Powder
LUMO	~2.1eV		
HOMO	~5.8eV		
Linear Formula	(C ₆₇ H ₇₈ N ₂) _n		
Mw	20,000~40,000 by GPC		
Mn	5,000~20,000 by GPC		
λ _{Abs.}	384 nm in THF		
λ _{PL}	498 nm in THF		


PLT105051G Poly[(9,9-dioctylfluorenyl-2,7-diyl)-alt-(4,4'-(N-(4-butylphenyl)))]

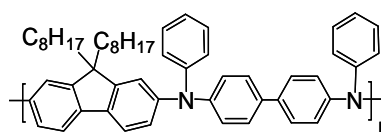
TFB	CAS # 223569-31-1	Green Emitter	Pale Yellow Powder
LUMO	~2.3eV		
HOMO	~5.3eV		
Linear Formula	(C ₅₁ H ₆₁ N ₂) _n		
Mw	20,000~60,000 by GPC		
Mn	10,000~30,000 by GPC		
λ _{Abs.}	389 nm in THF		
λ _{PL}	440 nm in THF		


PLT105031G Poly[(9,9-dioctylfluorenyl-2,7-diyl)-alt-(2-methoxy-5-(2-ethylhexyloxy)phenylenevinylene-1,4-diyl)]

PFOPV	CAS # 1383605-56-8	Green Emitter	Bright Yellow Powder
LUMO	~2.10eV		
HOMO	~4.40V		
Linear Formula	(C ₄₈ H ₆₆ O ₂) _n		
Mw	60,000~80,000 by GPC		
Mn	40,000~60,000 by GPC		
λ _{Abs.}	458 nm and 480 nm in THF		
λ _{PL}	505 nm and 536 nm in THF		


PLT105041B Poly[(9,9-dioctylfluorene-2,7-diyl)-alt-(N,N'-diphenylbenzidine-N,N'-diyl)]

PFOBPA	CAS # 484032-91-9	Blue Emitter	Pale Yellow fiber or flake
LUMO			
HOMO			
Linear Formula	(C ₅₃ H ₅₈ N ₂) _n		
Mw	10,000~20,000 by GPC		
Mn	5,000~10,000 by GPC		
λ _{Abs.}	386 nm in THF		
λ _{PL}	426 and 441 nm in THF		



Bu-PPP	CAS # 87187-05-1	Blue Emitter	White Powder
--------	------------------	--------------	--------------

LUMO

HOMO

Linear Formula

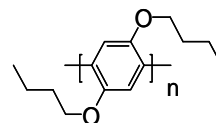
 $(C_{14}H_{20}O_2)_n$

Mw

10,000~30,000 by GPC

Mn

5,000~15,000 by GPC

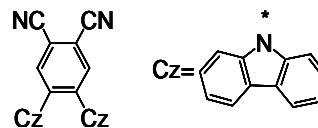
 $\lambda_{Abs.}$ λ_{PL} 

2. TADF Materials (热延迟荧光材料)

PLT402011B

4,5-bis(carbazol-9-yl)-1,2-dicyanobenzene

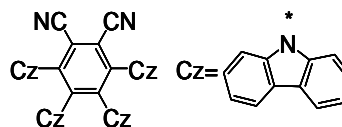
2CzPN	CAS # 1416881-50-9	Blue Emitter	Pale Yellow Powder
LUMO			
HOMO			
Linear Formula	C ₃₂ H ₁₈ N ₄		
Mol Weight	458.51		
Purity	>99%(HPLC), Sublimed		
λ _{Abs.}	329 nm and 368 nm in Toluene		
λ _{PL}	475 nm in Toluene		



PLT402021G

3,4,5,6-tetrakis(carbazol-9-yl)-1,2-dicyanobenzene

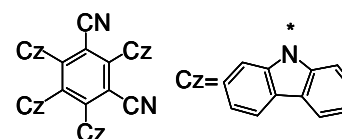
4CzPN	CAS # 1416881-51-0	Green Emitter	Orange Powder
LUMO			
HOMO			
Linear Formula	C ₅₆ H ₃₂ N ₆		
Mol. Weight	788.27		
Purity	>99%(HPLC), Sublimed		
λ _{Abs.}	315 nm, 326 nm and 363 nm in Toluene		
λ _{PL}	528 nm in Toluene		



PLT402031G

2,4,5,6-tetrakis(carbazol-9-yl)-1,3-dicyanobenzene

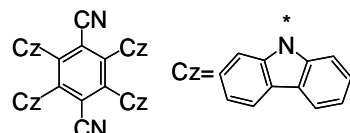
4CzIPN	CAS # 1416881-52-1	Green Emitter	Orange Powder
LUMO			
HOMO			
Linear Formula	C ₅₆ H ₃₂ N ₆		
Mol. Weight	788.27		
Purity	>99%(HPLC), Sublimed		
λ _{Abs.}			
λ _{PL}	505 nm in Toluene		



PLT402041G

2,3,5,6-tetrakis(carbazol-9-yl)-1,4-dicyanobenzene

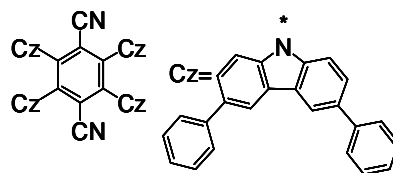
4CzTPN	CAS # 1416881-53-2	Green Emitter	Orange Powder
LUMO			
HOMO			
Linear Formula	C ₅₆ H ₃₂ N ₆		
Mol. Weight	788.27		
Purity	>99%(HPLC), Sublimed		
λ _{Abs.}	329 nm, 453 nm and 475 nm in Toluene		
λ _{PL}	537 nm in Toluene		



PLT402061R
2,3,5,6-tetrakis(3,6-diphenylcarbazol-9-yl)-1,4-dicyanobenzene
4CzTPN-Ph CAS # 1416881-55-4 Red Emitter Red Powder
LUMO
HOMO
Linear Formula C₁₀₄H₆₄N₆
Mol. Weight 1397.66

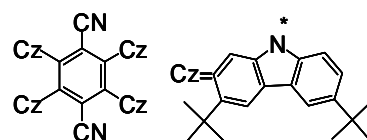
Purity >99%(HPLC), Sublimed

λ_{Abs.} 283 nm, 377 nm, 502 nm and 547 nm in Toluene

λ_{PL} 581 nm and 603 nm in Toluene

PLT402071Y
2,3,5,6-tetrakis(3,6-di-t-Butylcarbazol-9-yl)-1,4-dicyanobenzene
4CzTPN-Bu CAS # Yellow Emitter Orange Powder
LUMO
HOMO
Linear Formula C₈₈H₉₆N₆
Mol. Weight 1237.74

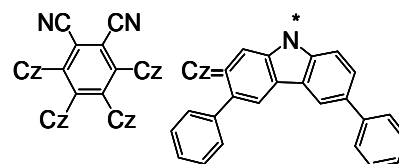
Purity >99%(HPLC), Sublimed

λ_{Abs.} 283 nm in Toluene

λ_{PL} 565 nm in Toluene

PLT402081Y
3,4,5,6-tetrakis(3,6-diphenylcarbazol-9-yl)-1,2-dicyanobenzene
4CzPN-Ph CAS # Yellow Emitter Orange Powder
LUMO
HOMO
Linear Formula C₁₀₄H₆₄N₆
Mol. Weight 1397.66

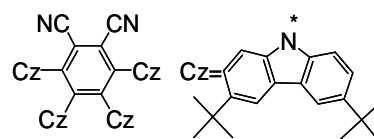
Purity >99%(HPLC)

λ_{Abs.} 288 nm, 376 nm in Toluene

λ_{PL} 561 nm in Toluene

PLT402091G
3,4,5,6-tetrakis(3,6-di-t-Butylcarbazol-9-yl)-1,2-dicyanobenzene
4CzPN-Bu CAS # Green Emitter Yellow Powder
LUMO
HOMO
Linear Formula C₈₈H₉₆N₆
Mol. Weight 1237.74

Purity >99%(HPLC), Sublimed

λ_{Abs.} 294 nm and 382 nm in Toluene

λ_{PL} 548 nm in Toluene


DMAC-DPS	CAS # 1477512-32-5	Yellow Emitter	Orange Powder
----------	--------------------	----------------	---------------

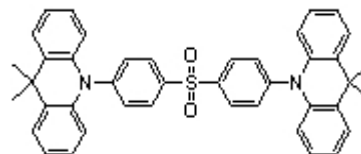
LUMO

HOMO

Linear Formula $C_{42}H_{36}N_2O_2S$

Mol. Weight 632.81

Purity >99 % (HPLC), Sublimed

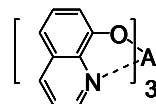
 $\lambda_{Abs.}$ λ_{PL} 

3. Organic Fluorescent Materials (有机荧光材料)

PLT401011G

Aluminum Tris(8-Hydroxyquinolate)

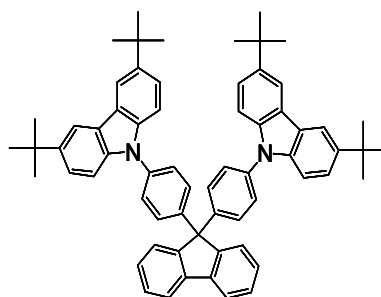
Alq3	CAS # 2085-33-8	Green Emitter	Yellow Powder
LUMO	~3.1eV		
HOMO	~5.8eV		
Linear Formula	C ₂₇ H ₁₈ AlN ₃ O ₃		
Mol. Weight	459.43		
Purity	>99 % (Sublimed)		
λ _{Abs.}	392 nm in THF		
λ _{PL}	528 nm in THF		



PLT403011B

9,9-di(4,4'-bis(3,6-Di-tert-butyl-9H-carbazole)-phenyl)-9H-fluorene

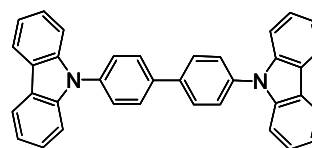
TBCPF	CAS # 954497-15-5	Blue Emitter	White Powder
LUMO	~2.1eV		
HOMO	~5.5eV		
Linear Formula	C ₆₅ H ₆₄ N ₂		
Mol. Weight	873.22		
Purity	>99 % (Sublimed)		
λ _{Abs.}	297 nm in THF		
λ _{PL}	355 nm and 370 nm in THF		



PLT403031B

4,4'-Bis(N-carbazolyl)-1,1'-biphenyl

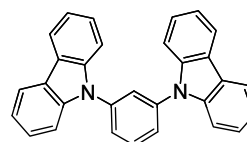
CBP	CAS # 58328-31-7	Blue Emitter	White Powder
LUMO	~2.7eV		
HOMO	~5.9eV		
Linear Formula	C ₃₆ H ₂₄ N ₂		
Mol. Weight	484.6		
Purity	>99 % (Sublimed)		
λ _{Abs.}	292 nm and 318 nm in THF		
λ _{PL}	369 nm in THF		



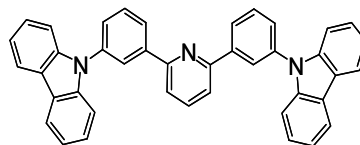
PLT403021B

1,3-Di-9-carbazolylbenzene

mCP	CAS # 550378-78-4	Blue Emitter	White Powder
LUMO	~2.3eV		
HOMO	~5.8eV		
Linear Formula	C ₃₀ H ₂₀ N ₂		
Mol. Weight	408.49		
Purity	>99 % (Sublimed)		
λ _{Abs.}	292 nm and 338 nm in THF		
λ _{PL}	345 nm and 340 nm in THF		



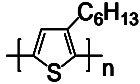
26DCzPPY	CAS # 1013405-24-7	Blue Emitter	White Powder
LUMO	~2.65eV		
HOMO	~6.05eV		
Linear Formula	C ₄₁ H ₂₇ N ₃		
Mol. Weight	561.67		
Purity	>99 % (Sublimed)		
λ_{Abs.}	239nm and 292nm in CH ₂ Cl ₂		
λ_{PL}	410nm in CH ₂ Cl ₂		



4. Organic Photovoltaic Materials (有机光伏材料)

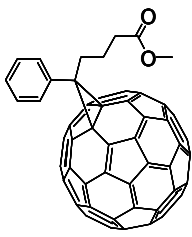
PLT601011T

Poly(3-hexylthiophene-2,5-diyl)

P3HT	CAS # 156074-98-5 /104934-50-1	Golden Red Fiber or Flake
LUMO	~3.0eV	
HOMO	~4.95eV	
Linear Formula	(C ₁₀ H ₁₄ S) _n	
Mw	30,000~60,000 by GPC	
Mn	15,000~30,000 by GPC	
λ_{Abs.}	442 nm in THF	
λ_{PL}	578 nm in THF	

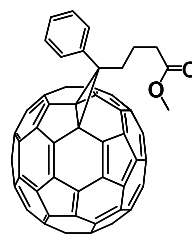
PLT602011F

[6,6]-Phenyl C61 butyric acid methyl ester

PC₆₁BM	CAS # 160848-21-5	Dark Grey Powder
LUMO	~3.7eV	
HOMO	~6.0eV	
Linear Formula	C ₇₂ H ₁₄ O ₂	
Mol. Weight	910.88	
Purity	>99 %	
λ_{Abs.}	294 nm and 340 nm in Toluene	
λ_{PL}		

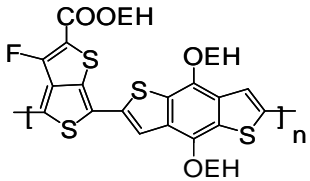
PLT602021F

[6,6]-Phenyl C71 butyric acid methyl ester, mixture of isomers

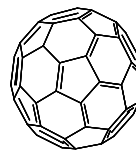
PC₇₁BM	CAS # 609771-63-3	Dark Grey Powder
LUMO	~4.30eV	
HOMO	~6.1eV	
Linear Formula	C ₈₂ H ₁₄ O ₂	
Mol. Weight	1030.93	
Purity	>99 %	
λ_{Abs.}	373 nm in Toluene	
λ_{PL}		

PLT603011T

Poly[[4,8-bis[(2-ethylhexyl)oxy]benzo[1,2-b:4,5-b']dithiophene-2,6-diyl][2-[[[(2-ethylhexyl)oxy]carbonyl]-3-fluorothieno[3,4-b]thiophenediyl]]

PTB7	CAS # 1266549-31-8	Brown Powder
LUMO	~3.31eV	
HOMO	~5.15eV	
Linear Formula	(C ₄₁ H ₅₃ FO ₄ S ₄) _n	
Mw	200,000~300,000 by GPC	
Mn	50,000~100,000 by GPC	
λ_{Abs.}	620 nm and 668 nm in THF	
λ_{PL}		

EH=2-Ethylhexyl

PLT602031F**Fullerene C60****C₆₀** CAS # 99685-96-8 Black Powder**LUMO****HOMO****Linear Formula** C₆₀**Mol. Weight** 720.64**Purity** >99%**λ_{Abs.}****λ_{PL}****PLT602041F****Fullerene C70****C₇₀** CAS # 115383-22-7 Black Powder**LUMO****HOMO****Linear Formula** C₇₀**Mol. Weight** 840.75**Purity** >99%**λ_{Abs.}****λ_{PL}**

5. Perovskite Materials (钙钛矿材料)

PLT501011I

Methylammonium Iodide

CH₃NH₃I(MAI)

CAS # 14965-49-2

White Powder

LUMO

HOMO

Linear Formula CH₆IN

Mol. Weight 158.97

Purity >99%

λ_{Abs.}

λ_{PL}



PLT501071I

Methylammonium Chloride

CH₃NH₃Cl(MACl)

CAS # 593-51-1

White Powder

LUMO

HOMO

Linear Formula CH₆CIN

Mol. Weight 67.02

Purity >99%

λ_{Abs.}

λ_{PL}



PLT501041I

Methylammonium Bromide

CH₃NH₃Br(MABr)

CAS # 6816-37-5

White Powder

LUMO

HOMO

Linear Formula CH₆BrN

Mol. Weight 111.97

Purity >99%

λ_{Abs.}

λ_{PL}



PLT501101I

Lead(II) Iodide

PbI₂

CAS # 10101-63-0

Yellow Crystalline Powder

LUMO

HOMO

Linear Formula PbI₂

Mol. Weight 461.01

Purity >99.99%

λ_{Abs.}

λ_{PL}



5. Perovskite Materials (钙钛矿材料)

PLT501011I		Methylammonium Iodide
CH ₃ NH ₃ I(MAI)	CAS # 14965-49-2	White Powder
LUMO		
HOMO		
Linear Formula	CH ₆ IN	CH ₃ NH ₃ ⁺ I ⁻
Mol. Weight	158.97	
Purity	>99%	
λ _{Abs.}		
λ _{PL}		

PLT501071I		Methylammonium Chloride
CH ₃ NH ₃ Cl(MACl)	CAS # 593-51-1	White Powder
LUMO		
HOMO		
Linear Formula	CH ₆ CIN	CH ₃ NH ₃ ⁺ Cl ⁻
Mol. Weight	67.02	
Purity	>99%	
λ _{Abs.}		
λ _{PL}		

PLT501041I		Methylammonium Bromide
CH ₃ NH ₃ Br(MABr)	CAS # 6816-37-5	White Powder
LUMO		
HOMO		
Linear Formula	CH ₆ BrN	CH ₃ NH ₃ ⁺ Br ⁻
Mol. Weight	111.97	
Purity	>99%	
λ _{Abs.}		
λ _{PL}		

PLT501101I		Lead(II) Iodide
PbI ₂	CAS # 10101-63-0	Yellow Crystalline Powder
LUMO		
HOMO		
Linear Formula	PbI ₂	PbI ₂
Mol. Weight	461.01	
Purity	>99.99%	
λ _{Abs.}		
λ _{PL}		

PLT501121I**Lead(II) Chloride****PbCl₂** CAS # 7758-95-4 White Crystalline Powder

LUMO

HOMO

Linear Formula PbCl₂

Mol. Weight 278.12

Purity >99.99%

 $\lambda_{\text{Abs.}}$ λ_{PL} **PLT501111I****Lead(II) Bromide****PbBr₂** CAS # 10031-22-8 White Crystalline Powder

LUMO

HOMO

Linear Formula PbBr₂

Mol. Weight 367.01

Purity >99.99%

 $\lambda_{\text{Abs.}}$ λ_{PL} **PLT501031I****Perovskite CH₃NH₃PbI₃ Powder****CH₃NH₃PbI₃** CAS # 69507-98-8 Black Powder

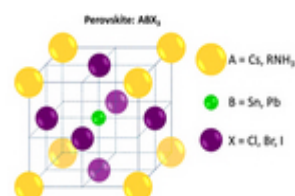
LUMO ~3.9eV

HOMO ~5.4eV

Linear Formula CH₆I₃NPb

Mol. Weight 619.98

Purity >99%

 $\lambda_{\text{Abs.}}$ λ_{PL} **PLT501191I****4-tert-Butylpyridine****TBP** CAS # 3978-81-2 Colorless Liquid

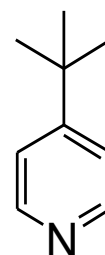
LUMO

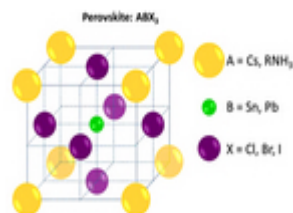
HOMO

Linear Formula C₉H₁₃N

Mol. Weight 135.21

Purity >96%

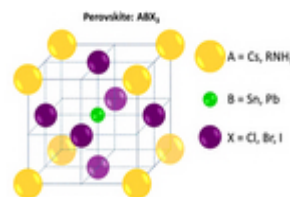
 $\lambda_{\text{Abs.}}$ λ_{PL} 

PLT501061I**Perovskite CH₃NH₃PbBr₃ Powder****CH₃NH₃PbBr₃** CAS # 69276-13-7 Orange Powder**LUMO** ~3.3eV**HOMO** ~5.6eV**Linear Formula** CH₆Br₃NPb**Mol. Weight** 478.98**Purity** >99%**λ_{Abs.}****λ_{PL}****PLT501131I****Formamidinium Iodide****HC(NH₂)₂I(FAI)** CAS # 879643-71-7 White Powder**LUMO****HOMO****Linear Formula** CH₅IN₂**Mol. Weight** 171.97**Purity** >99%**λ_{Abs.}****λ_{PL}****PLT501151I****Formamidinium Chloride****HC(NH₂)₂Cl(FACl)** CAS # 6313-33-3 White Powder**LUMO****HOMO****Linear Formula** CH₅ClN₂**Mol. Weight** 80.52**Purity** >99%**λ_{Abs.}****λ_{PL}****PLT501141I****Formamidinium Bromide****HC(NH₂)₂Br(FABr)** CAS # 146958-06-7 White Powder**LUMO****HOMO****Linear Formula** CH₅BrN₂**Mol. Weight** 124.97**Purity** >99%**λ_{Abs.}****λ_{PL}**

PLT501161I**Formamidinium Iodide Perovskite // Formamidinium lead Iodide****FAPbI₃** CAS # 1451592-07-6

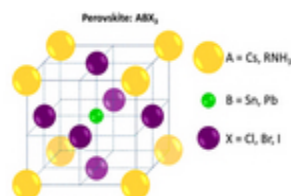
LUMO

HOMO

Linear Formula CH₅I₃N₂Pb**Mol. Weight** 632.98**Purity** >99% $\lambda_{\text{Abs.}}$ λ_{PL} **PLT501171I****Formamidinium Bromide Perovskite // Formamidinium lead Bromide****FAPbBr₃** CAS # 1008105-17-6

LUMO

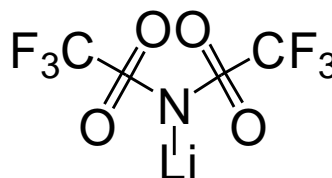
HOMO

Linear Formula CH₅Br₃N₂Pb**Mol. Weight** 491.98**Purity** >99% $\lambda_{\text{Abs.}}$ λ_{PL} **PLT502081T****Lithium bis(trifluoromethanesulphonyl)imide****LiTFSI** CAS # 90076-65-6

Colorless Liquid

LUMO

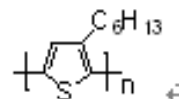
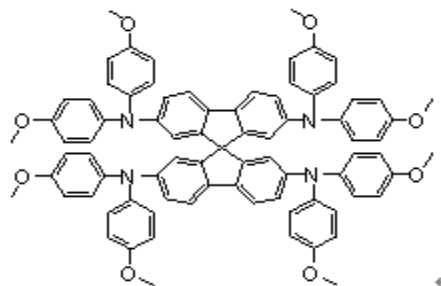
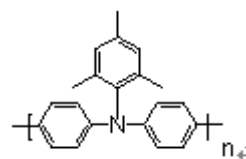
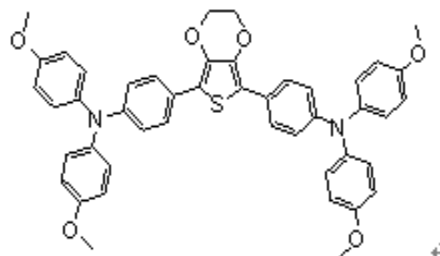
HOMO

Linear Formula C₂F₆LiNO₄S₂**Mol. Weight** 287.09**Purity** >99% $\lambda_{\text{Abs.}}$ λ_{PL} **PLT502051T****TiO₂ Paste (Dyesol浆料进口分包)** CAS #

LUMO

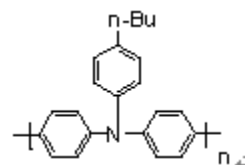
HOMO

Linear Formula TiO₂**Mol. Weight****Purity** >99% $\lambda_{\text{Abs.}}$ λ_{PL}

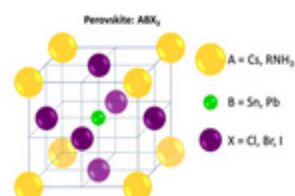
PLT601011T**Poly(3-hexylthiophene-2,5-diyl)****P3HT** CAS # 156074-98-5, 104934-50-1 Golden red fiber or flake**LUMO****HOMO****Linear Formula** (C₁₀H₁₄S)_n**Mw** Mw 30,000~60,000 by GPC**Mn** Mn 15,000~30,000 by GPC**λ_{Abs.}****λ_{PL}****PLT502011T 2,2',7,7'-Tetrakis[N,N-di(4-methoxyphenyl)amino]-9,9'-spiro-bifluorene****Spiro-OMeTAD** CAS # 207739-72-8 Yellow Powder**LUMO****HOMO****Linear Formula** C₈₁H₆₈N₄O₈**Mol. Weight** 1225.43**Purity** >99%**λ_{Abs.}****λ_{PL}****PLT502021T Poly[bis(4-phenyl)(2,4,6-trimethylphenyl)amine]****PTAA** CAS # 1333317-99-9 Yellow Fiber or Flake**LUMO****HOMO****Linear Formula** (C₂₁H₁₉N)_n**Mw** Mw 7,000~15,000 by GPC**Mn** Mn 5,000~10,000 by GPC**λ_{Abs.}****λ_{PL}****PLT502031T 2,5-bis(4,4'-bis(methoxyphenyl)aminophen-4-yl)-3,4-ethylenedioxythiophene****PTA-EDOT** CAS # NA Yellow Powder**LUMO****HOMO****Linear Formula** C₄₆H₄₀N₂O₆S**Mol. Weight** 748.88**Purity** >99%**λ_{Abs.}****λ_{PL}**

PLT502041T**Poly[bis(4-phenyl)(4-butylphenyl)amine]**

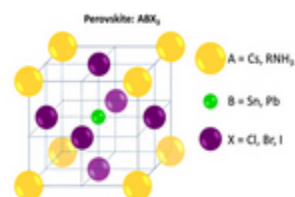
Poly-TPD	CAS # 472960-35-3	Yellow Fiber or Flake
-----------------	-------------------	-----------------------

LUMO**HOMO****Linear Formula** (C₂₂H₂₁N)_n**Mw** Mw 20,000~40,000 by GPC**Mn** Mn 10,000~20,000 by GPC**λ_{Abs.}****λ_{PL}****PLT501211I****Methylammonium lead Chloride Iodide**

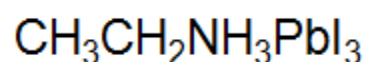
MAPbI₂Cl	CAS # 1446121-07-8	Dark Brown Powder
----------------------------	--------------------	-------------------

LUMO**HOMO****Linear Formula** CH₆ClI₂NPb**Mol. Weight** 528.53**Purity** >99%**λ_{Abs.}****λ_{PL}****PLT501191I****Methylammonium Lead Chloride Iodide**

MAPbI₂Cl	CAS # 1472068-56-6	Dark Brown Powder
----------------------------	--------------------	-------------------

LUMO**HOMO****Linear Formula** CH₆ClI₂NPb**Mol. Weight** 437.8**Purity** >99%**λ_{Abs.}****λ_{PL}****PLT501221I****Ethylammonium Lead Iodide**

CH₃CH₂NH₃PbI₃	CAS # 1640335-04-1	Orange Powder
--	--------------------	---------------

LUMO**HOMO****Linear Formula** C₂H₈I₃NPb**Mol. Weight** 634.01**Purity** >99%**λ_{Abs.}****λ_{PL}**

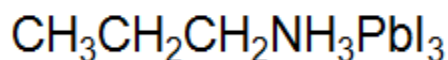
PLT501231I**Propylammonium Lead Iodide****CH₃CH₂CH₂NH₃PbI₃**

CAS # 1646171-78-9

Orange Powder

LUMO

HOMO

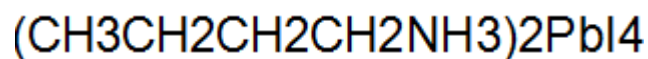
Linear Formula C₃H₁₀I₃NPb**Mol. Weight** 648.03**Purity** >99% $\lambda_{\text{Abs.}}$ λ_{PL} **PLT501241I****Butylammonium Lead Iodide****(CH₃CH₂CH₂CH₂NH₃)₂PbI₄**

CAS # 132069-10-4

Orange Powder

LUMO

HOMO

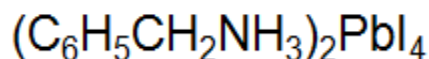
Linear Formula C₈H₂₄I₄N₂Pb**Mol. Weight** 863.11**Purity** >99% $\lambda_{\text{Abs.}}$ λ_{PL} **PLT501251I****Phenethylammonium Lead Iodide****(C₆H₅CH₂NH₃)₂PbI₄**

CAS # 256222-08-9

Orange Powder

LUMO

HOMO

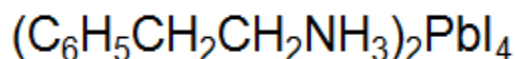
Linear Formula C₁₄H₂₀I₄N₂Pb**Mol. Weight** 931.14**Purity** >99% $\lambda_{\text{Abs.}}$ λ_{PL} **PLT501261I****Phenethylammonium Lead Iodide****(C₆H₅CH₂CH₂NH₃)₂PbI₄**

CAS # 131457-08-4, 1616349-69-9

Orange Powder

LUMO

HOMO

Linear Formula C₁₆H₂₄I₄N₂Pb**Mol. Weight** 959.12**Purity** >99% $\lambda_{\text{Abs.}}$ λ_{PL} 

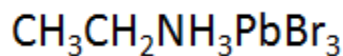
PLT501271I**Ethylammonium Lead Bromide****CH₃CH₂NH₃PbBr₃**

CAS # 17251-33-1

Light Yellow Powder

LUMO

HOMO

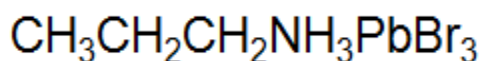
Linear Formula C₂H₈Br₃NPb**Mol. Weight** 493.00**Purity** >99% $\lambda_{\text{Abs.}}$ λ_{PL} **PLT501281I****Propylammonium Lead Bromide****CH₃CH₂CH₂NH₃PbBr₃**

CAS # NA

Off White or Pale Yellow Powder

LUMO

HOMO

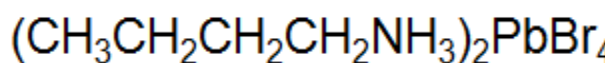
Linear Formula C₃H₁₀Br₃NPb**Mol. Weight** 507.03**Purity** >99% $\lambda_{\text{Abs.}}$ λ_{PL} **PLT501291I****Butylammonium Lead Bromide****(CH₃CH₂CH₂CH₂NH₃)₂PbBr₄**

CAS # NA

Off White or Pale Yellow Powder

LUMO

HOMO

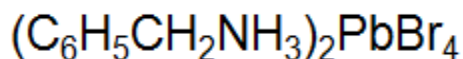
Linear Formula C₈H₂₄Br₄N₂Pb**Mol. Weight** 675.11**Purity** >99% $\lambda_{\text{Abs.}}$ λ_{PL} **PLT501301I****Phenethylammonium Lead Bromide****(C₆H₅CH₂NH₃)₂PbBr₄**

CAS # NA

Off White or Pale Yellow Powder

LUMO

HOMO

Linear Formula C₁₄H₂₀Br₄N₂Pb**Mol. Weight** 743.14**Purity** >99% $\lambda_{\text{Abs.}}$ λ_{PL}

PLT501311I**Phenethylammonium Lead Bromide**

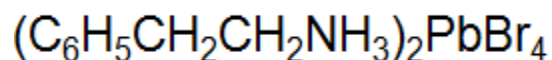
(C₆H₅CH₂CH₂NH₃)₂PbBr₄ CAS # 131457-16-4 Off White or Pale Yellow Powder

LUMO

HOMO

Linear Formula C₁₆H₂₄Br₄N₂Pb

Mol. Weight 771.19



Purity >99%

 $\lambda_{Abs.}$ λ_{PL} **PLT501321I****Cesium Lead Chloride**

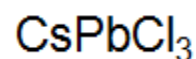
CsPbCl₃ CAS # 15203-83-5 White Powder

LUMO

HOMO

Linear Formula Cl₃CsPb

Mol. Weight 446.46



Purity >99%

 $\lambda_{Abs.}$ λ_{PL} **PLT501331I****Cesium Lead Bromide**

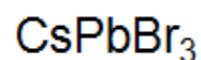
CsPbBr₃ CAS # 15243-48-8 Orange Powder

LUMO

HOMO

Linear Formula Br₃CsPb

Mol. Weight 579.82



Purity >99%

 $\lambda_{Abs.}$ λ_{PL} **PLT501341I****Cesium Lead Iodide**

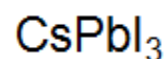
CsPbI₃ CAS # 18041-25-3 Yellow Powder

LUMO

HOMO

Linear Formula I₃CsPb

Mol. Weight 720.82



Purity >99%

 $\lambda_{Abs.}$ λ_{PL}

PLT501351I**Ethylammonium Iodide**

CH ₃ CH ₂ NH ₃ I	CAS # 506-58-1	White Powder
LUMO		
HOMO		
Linear Formula	C ₂ H ₈ IN	CH ₃ CH ₂ NH ₃ I
Mol. Weight	173.00	
Purity	>99.5%	
λ _{Abs.}		
λ _{PL}		

PLT501361I**Propylammonium Iodide**

CH ₃ CH ₂ CH ₂ NH ₃ I	CAS # 14488-45-0	White Powder
LUMO		
HOMO		
Linear Formula	C ₃ H ₁₀ IN	CH ₃ CH ₂ CH ₂ NH ₃ I
Mol. Weight	187.02	
Purity	>99.5%	
λ _{Abs.}		
λ _{PL}		

PLT501371I**Butylammonium Iodide**

CH ₃ CH ₂ CH ₂ CH ₂ NH ₃ I	CAS # 36945-08-1	White Powder
LUMO		
HOMO		
Linear Formula	C ₄ H ₁₂ IN	CH ₃ CH ₂ CH ₂ CH ₂ NH ₃ I
Mol. Weight	201.05	
Purity	>99.5%	
λ _{Abs.}		
λ _{PL}		

PLT501381I**Phenethylammonium Iodide**

C ₆ H ₅ CH ₂ NH ₃ I	CAS # 45579-91-7	White Powder
LUMO		
HOMO		
Linear Formula	C ₇ H ₁₀ IN	C ₆ H ₅ CH ₂ NH ₃ I
Mol. Weight	235.07	
Purity	>99.5%	
λ _{Abs.}		
λ _{PL}		

PLT501391I**Phenethylammonium Iodide**

C6H5CH2CH2NH3I

CAS # 151059-43-7

White Powder

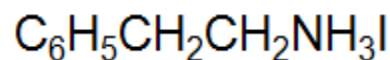
LUMO

HOMO

Linear Formula C8H12IN

Mol. Weight 249.09

Purity >99.5%

 $\lambda_{\text{Abs.}}$ λ_{PL} **PLT501401I****Ethylammonium Bromide**

CH3CH2NH3Br

CAS # 593-55-5

White Powder

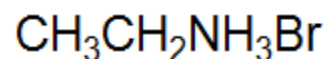
LUMO

HOMO

Linear Formula C2H8BrN

Mol. Weight 126.00

Purity >99.5%

 $\lambda_{\text{Abs.}}$ λ_{PL} **PLT501411I****Propylammonium Bromide**

CH3CH2CH2NH3Br

CAS # 4905-83-3

White Powder

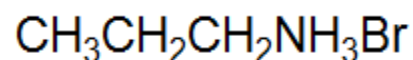
LUMO

HOMO

Linear Formula C3H10BrN

Mol. Weight 140.02

Purity >99.5%

 $\lambda_{\text{Abs.}}$ λ_{PL} **PLT501421I****Butylammonium Bromide**

CH3CH2CH2CH2NH3Br

CAS # 15567-09-6

White Powder

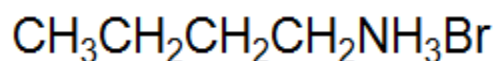
LUMO

HOMO

Linear Formula C4H12BrN

Mol. Weight 154.05

Purity >99.5%

 $\lambda_{\text{Abs.}}$ λ_{PL} 

PLT501431I**Phenmethyllumonium Bromide**

C6H5CH2NH3Br	CAS # 37488-40-7	White Powder
LUMO		
HOMO		
Linear Formula	C7H10BrN	$C_6H_5CH_2NH_3Br$
Mol. Weight	188.07	
Purity	>99.5%	
$\lambda_{Abs.}$		
λ_{PL}		

PLT501441I**Phenethylammonium Bromide**

C6H5CH2CH2NH3Br	CAS # 53916-94-2	White Powder
LUMO		
HOMO		
Linear Formula	C8H12BrN	$C_6H_5CH_2CH_2NH_3Br$
Mol. Weight	202.09	
Purity	>99.5%	
$\lambda_{Abs.}$		
λ_{PL}		

PLT501501I**Cesium Iodide**

CsI	CAS # 7789-17-5	White Powder
LUMO		
HOMO		
Linear Formula	CsI	CsI
Mol. Weight	259.81	
Purity	>99.9%	
$\lambda_{Abs.}$		
λ_{PL}		

PLT501491I**Cesium Bromide**

CsBr	CAS # 7787-69-1	White Powder
LUMO		
HOMO		
Linear Formula	CsBr	CsBr
Mol. Weight	212.81	
Purity	>99.9%	
$\lambda_{Abs.}$		
λ_{PL}		

PLT501481I**Cesium Chloride**

CsCl	CAS # 7647-17-8	White Powder
LUMO		
HOMO		
Linear Formula	CsCl	
Mol. Weight	168.36	CsCl
Purity	>99.9%	
$\lambda_{Abs.}$		
λ_{PL}		


PLT501451I**Octylammonium Bromide**

CH ₃ (CH ₂) ₇ NH ₃ Br	CAS # 14846-47-0	White Powder
LUMO		
HOMO		
Linear Formula	C ₈ H ₂₀ BrN	
Mol. Weight	210.16	CH ₃ (CH ₂) ₇ NH ₃ Br
Purity	>99.5%	
$\lambda_{Abs.}$		
λ_{PL}		

PLT501461I**Dodecylammonium Bromide**

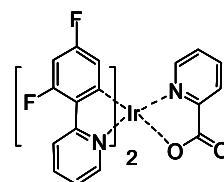
CH ₃ (CH ₂) ₁₁ NH ₃ Br	CAS # NA	White Powder
LUMO		
HOMO		
Linear Formula	C ₁₂ H ₂₈ BrN	
Mol. Weight	266.26	CH ₃ (CH ₂) ₁₁ NH ₃ Br
Purity	>99.5%	
$\lambda_{Abs.}$		
λ_{PL}		

PLT501471I**Oleylammonium Bromide**

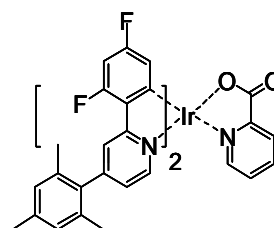
9-十八烯基溴化胺	CAS # NA	White Powder
LUMO		
HOMO		
Linear Formula	C ₁₈ H ₃₈ BrN	
Mol. Weight	348.41	
Purity	>99.5%	
$\lambda_{Abs.}$		
λ_{PL}		

6. Organic Phosphorescent Materials (有机磷光材料)

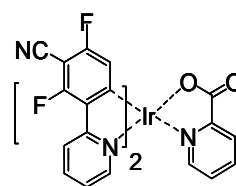
PLT201011B		uorophenyl)pyridinato-C2,N](picolinato)iridium(III)	
FIrPic	CAS # 376367-93-0	Blue Emitter	Yellow Powder
LUMO	~2.9eV		
HOMO	~5.8eV		
Linear Formula	$C_{28}H_{16}F_4IrN_3O_2$		
Mol. Weight	694.66		
Purity	>99 % (Sublimed)		
$\lambda_{Abs.}$	298 nm in THF		
λ_{PL}	473 nm and 496 nm in THF		



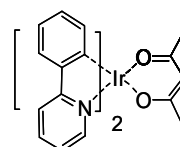
PLT201131B		Bis[2-(4,6-difluorophenyl)-4-(2,4,6-trimethylphenyl)pyridinato-C2,N](picolinato)iridium(III)	
PhFIrPic	CAS # 1435909-76-4	Blue Emitter	Yellow Powder
LUMO	~2.9eV		
HOMO	~5.8eV		
Linear Formula	$C_{46}H_{36}F_4IrN_3O_2$		
Mol. Weight	931.01		
Purity	>99 %		
$\lambda_{Abs.}$	294 nm and 383 nm in THF		
λ_{PL}	473 nm in THF		



PLT201151B		Bis[2-(5-cyano-4,6-difluorophenyl)pyridinato-C2,N](picolinato)iridium(III)	
FCNIrPic	CAS # 665005-28-7	Blue Emitter	Yellow Powder
LUMO			
HOMO			
Linear Formula	$C_{30}H_{14}F_4IrN_5O_2$		
Mol. Weight	744.69		
Purity	>99% (HPLC), Sublimed		
$\lambda_{Abs.}$			
λ_{PL}			

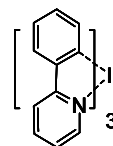


PLT201051G		Bis(2-phenylpyridinato-C2,N)(acetylacetonate)iridium(III)	
Ir(ppy)2(acac)	CAS # 337526-85-9	Green Emitter	Yellow Powder
LUMO	~3.0eV		
HOMO	~5.6eV		
Linear Formula	$C_{27}H_{23}IrN_2O_2$		
Mol. Weight	599.71		
Purity	>99%(HPLC), Sublimed		
$\lambda_{Abs.}$	326 nm in THF		
λ_{PL}	372 nm in THF		

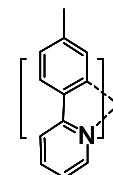


PLT201021G**Tris(2-phenylpyridinato-C2,N)iridium(III)**

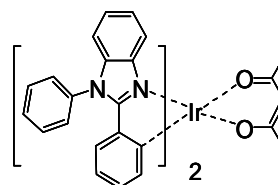
Ir(ppy)3	CAS # 94928-86-6	Green Emitter	Yellow Powder
LUMO	~2.6eV		
HOMO	~5.6eV		
Linear Formula	$C_{33}H_{24}IrN_3$		
Mol. Weight	654.78		
Purity	>99 % (Sublimed)		
$\lambda_{Abs.}$	294 nm and 378 nm in THF		
λ_{PL}	516 nm in THF		

**PLT201061G****Tris[2-(p-tolyl)pyridine-C2,N]iridium(III)**

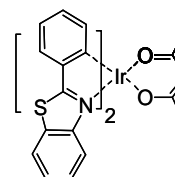
Ir(mppy)3	CAS # 800394-58-5	Green Emitter	Yellow Powder
LUMO	~2.4eV		
HOMO	~5.4eV		
Linear Formula	$C_{36}H_{30}IrN_3$		
Mol. Weight	699.88		
Purity	>99 % (Sublimed)		
$\lambda_{Abs.}$	299 nm and 374nm in THF		
λ_{PL}	513 nm in THF		

**PLT201071G****Bis(1,2-diphenyl-1H-benzimidazol-C2,N)(acetylacetonate)iridium(III)**

Ir(pbi)2(acac)	CAS # 725251-25-2	Green Emitter	Yellow Powder
LUMO	~2.44eV		
HOMO	~5.12eV		
Linear Formula	$C_{43}H_{33}IrN_4O_2$		
Mol. Weight	829.96		
Purity	>99 % (Sublimed)		
$\lambda_{Abs.}$	302 nm and 313 nm in THF		
λ_{PL}	526 nm and 555 nm in THF		

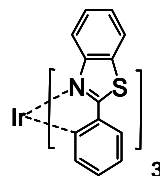
**PLT201041Y****Bis(2-phenyl-benzothiazole-C2,N)(acetylacetonate)iridium(III)**

Ir(bt)2(acac)	CAS # 337526-88-2	Yellow Emitter	Orange Powder
LUMO			
HOMO			
Linear Formula	$C_{31}H_{23}IrN_2O_2S_2$		
Mol. Weight	679.81		
Purity	>99 % (Sublimed)		
$\lambda_{Abs.}$	225 nm, 272 nm ,314 nm and 327 nm in THF		
λ_{PL}	561 nm and 604 nm in THF		

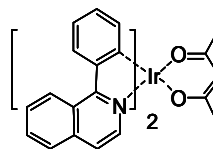


PLT201161Y
Tris(2-phenyl-benzothiazole-C2,N) iridium(III)

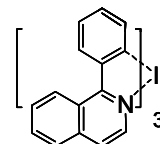
Ir(bt) ₃	CAS # 468732-34-5	Yellow Emitter	Yellow Powder
LUMO			
HOMO			
Linear Formula	C ₃₉ H ₂₄ IrN ₃ S ₃		
Mol. Weight	823.04		
Purity	>99 % (Sublimed)		
λ _{Abs.}			
λ _{PL}			


PLT201031R
Bis(1-phenyl-isoquinoline-C2,N)(acetylacetonato)iridium(III)

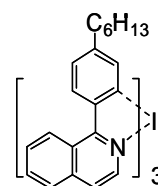
Ir(piq) ₂ (acac)	CAS # 435294-03-4	Red Emitter	Red Powder
LUMO	~2.7eV		
HOMO	~5.0eV		
Linear Formula	C ₃₅ H ₂₇ IrN ₂ O ₂		
Mol. Weight	699.82		
Purity	>99 % (Sublimed)		
λ _{Abs.}	302 nm in THF		
λ _{PL}	633 nm in THF		


PLT201081R
Tris(1-phenylisoquinolinato-C2,N)iridium(III)

Ir(piq) ₃	CAS # 435294-03-4	Red Emitter	Red Powder
LUMO	~3.1eV		
HOMO	~5.1eV		
Linear Formula	C ₄₅ H ₃₀ IrN ₃		
Mol. Weight	804.97		
Purity	>99 % (Sublimed)		
λ _{Abs.}	320 nm and 425 nm in THF		
λ _{PL}	631 nm in THF		

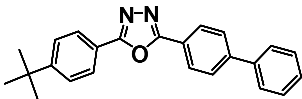

PLT201141R
Tris(1-(4-hexylphenyl)-isoquinolinato-C2,N)iridium(III)

Ir(hpiq) ₃	CAS # 1240249-29-9	Red Emitter	Red Powder
LUMO	~2.8eV		
HOMO	~4.9eV		
Linear Formula	C ₆₃ H ₆₉ IrN ₃		
Mol. Weight	1060.46		
Purity	>99 %		
λ _{Abs.}			
λ _{PL}	628 nm in THF		

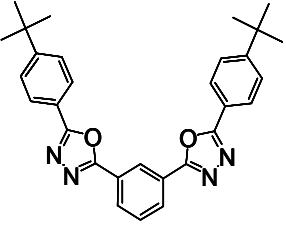


7. Transport Materials (电子和空穴传输材料)

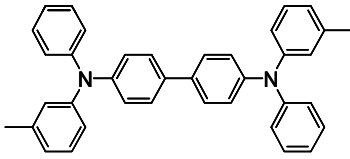
PLT301011T 2-(4-tert-Butylphenyl)-5-(4-biphenyl)-1,3,4-oxadiazole

Butyl-PBD	CAS # 15082-28-7	White Powder
LUMO	~2.6eV	
HOMO	~6.2eV	
Linear Formula	C ₂₄ H ₂₂ N ₂	
Mol. Weight	354.44	
Purity	>99% (HPLC), Sublimed	
λ_{Abs.}	305 nm in THF	
λ_{PL}	364 nm in THF	

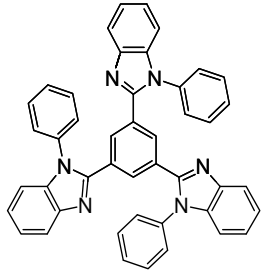
PLT301021T 2,2'-(1,3-Phenylene)-bis[5-(4-tert-butylphenyl)-1,3,4-oxadiazole]

OXD-7	CAS # 138372-67-5	White Powder
LUMO	~3.0eV	
HOMO	~6.3eV	
Linear Formula	C ₃₀ H ₃₀ N ₄ O ₂	
Mol. Weight	478.58	
Purity	>99% (HPLC), Sublimed	
λ_{Abs.}	292 nm in THF	
λ_{PL}	347 nm in THF	

PLT302011T N,N'-Bis(3-methylphenyl)-N,N'-bis(phenyl)benzidine

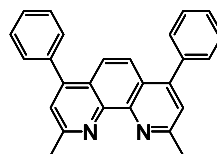
TPD	CAS # 65181-78-4	White Powder
LUMO	~2.3eV	
HOMO	~5.5eV	
Linear Formula	C ₃₈ H ₃₂ N ₂	
Mol. Weight	516.67	
Purity	>99% (HPLC), Sublimed	
λ_{Abs.}	309 nm and 351 nm in THF	
λ_{PL}	399 nm in THF	

PLT302021T 1,3,5-Tris(1-phenyl-1H-benzimidazol-2-yl)benzene

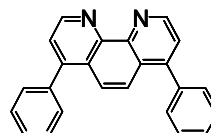
TPBi	CAS # 192198-85-9	White Powder
LUMO	~2.7eV	
HOMO	~6.2eV	
Linear Formula	C ₅₆ H ₃₂ N ₆	
Mol. Weight	654.76	
Purity	>99% (HPLC), Sublimed	
λ_{Abs.}		
λ_{PL}		

PLT302031T**2,9-dimethyl-4,7-diphenyl-1,10-Phenanthroline**

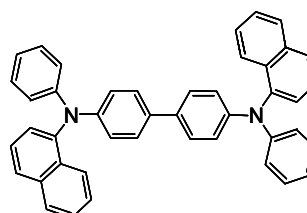
BCP	CAS # 4733-39-5	Yellow Powder
LUMO	~2.9eV	
HOMO	~6.4eV	
Linear Formula	$C_{26}H_{20}N_2$	
Mol. Weight	360.45	
Purity	>99% (HPLC), Sublimed	
$\lambda_{Abs.}$	303 nm in THF	
λ_{PL}	384 nm in THF	

**PLT302041T****4,7-diphenyl-1, 10-Phenanthroline**

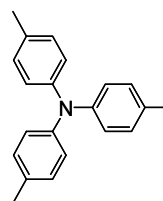
Bphen	CAS # 1662-01-7	Off-white or Yellowish Powder
LUMO	~2.3eV	
HOMO	~5.2eV	
Linear Formula	$C_{24}H_{16}N_2$	
Mol. Weight	332.4	
Purity	>99% (HPLC), Sublimed	
$\lambda_{Abs.}$	303 nm in THF	
λ_{PL}	377 nm in THF	

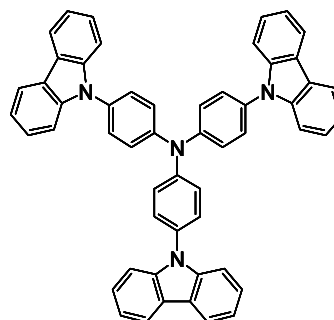
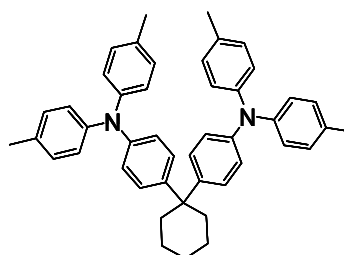
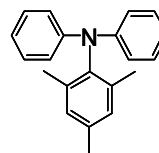
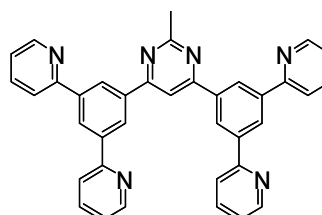
**PLT302061T****N,N'-Bis-(1-naphthalenyl)-N,N'-bis-phenyl-(1,1'-biphenyl)-4,4'-diamine**

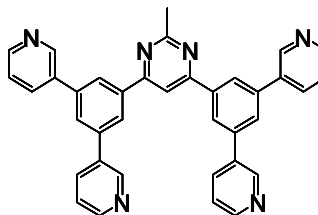
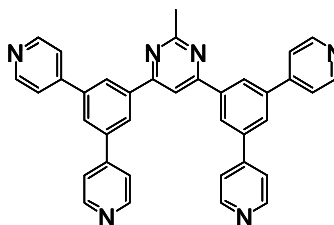
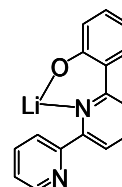
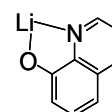
NPB	CAS # 123847-85-8
LUMO	~2.3eV
HOMO	~5.2eV
Linear Formula	$C_{44}H_{32}N_2$
Mol. Weight	588.74
Purity	>99% (HPLC), Sublimed
$\lambda_{Abs.}$	339 nm in THF
λ_{PL}	450 nm in THF

**PLT302051T****4,4',4''-Trimethyltriphenylamine**

TmTPA	CAS # 1159-53-1
LUMO	
HOMO	
Linear Formula	$C_{21}H_{21}N$
Mol. Weight	287.4
Purity	>99% (HPLC), Sublimed
$\lambda_{Abs.}$	326 nm in THF
λ_{PL}	372 nm in THF



PLT302081T**4,4',4''-Tris(carbazol-9-yl)triphenylamine****TCTA** CAS # 139092-78-7**LUMO** ~2.4eV**HOMO** ~5.7eV**Linear Formula** C₅₄H₃₆N₄**Mol. Weight** 740.89**Purity** >99%(HPLC), Sublimed**λ_{Abs.}** 293 nm and 326 nm in THF**λ_{PL}** 385 nm in THF**PLT302111T****4,4'-cyclohexylidenebis[N,N-bis(p-tolyl)aniline]****TAPC** CAS # 58473-78-2**LUMO** ~1.8eV**HOMO** ~5.3eV**Linear Formula** C₄₆H₄₆N₂**Mol. Weight** 626.87**Purity** >99%(HPLC), Sublimed**λ_{Abs.}****λ_{PL}****PLT302121T****N,N-diphenyl-2,4,6-trimethylaniline****TAA** CAS # 603134-65-2**LUMO****HOMO****Linear Formula** C₂₁H₂₁N**Mol. Weight** 287.4**Purity** >99%(HPLC), Sublimed**λ_{Abs.}****λ_{PL}****PLT301041T****4,6-Bis(3,5-di(pyridin-2-yl)phenyl)-2-methylpyrimidine****B2PyMPM** CAS # 1266181-51-4**LUMO****HOMO****Linear Formula** C₃₇H₂₆N₆**Mol. Weight** 554.64**Purity** >99%(HPLC), Sublimed**λ_{Abs.}****λ_{PL}**

PLT301051T**4,6-Bis(3,5-di(pyridin-3-yl)phenyl)-2-methylpyrimidine****B3PyMPM** CAS # 925425-96-3**LUMO** ~2.42eV**HOMO** ~6.80eV**Linear Formula** C₃₇H₂₆N₆**Mol. Weight** 554.64**Purity** >99% (HPLC), Sublimed**λ_{Abs.}****λ_{PL}****PLT301061T****4,6-Bis(3,5-di(pyridin-4-yl)phenyl)-2-methylpyrimidine****B4PyMPM** CAS # 1030380-51-8**LUMO****HOMO****Linear Formula** C₃₇H₂₆N₆**Mol. Weight** 554.64**Purity** >99% (HPLC), Sublimed**λ_{Abs.}****λ_{PL}****PLT302161T****Lithium 2-(2', 2''-bipyridine-6'-yl)phenolate****LiBPP** CAS # 1049805-81-3**LUMO** ~2.61eV**HOMO** ~5.56eV**Linear Formula** C₁₆H₁₁LiN₂O**Mol. Weight** 254.21**Purity** >99% (HPLC), Sublimed**λ_{Abs.}****λ_{PL}****PLT302171T****Lithium 8-Hydroxyquinolinolate****Liq** CAS # 850918-68-2**LUMO****HOMO****Linear Formula** C₉H₆LiNO**Mol. Weight** 151.09**Purity** >99% (HPLC), Sublimed**λ_{Abs.}****λ_{PL}**

PEDOT:PSS CAS # 155090-83-8

LUMO

HOMO

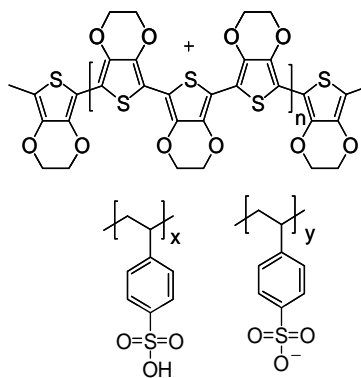
Linear Formula

Mol. Weight

Purity

$\lambda_{Abs.}$

λ_{PL}



8. Special Material (特种材料)

PLT701011S

Cyclopentasilane

CPS CAS # 289-22-5 Lightless Oil

LUMO

HOMO

Linear Formula $H_{10}Si_5$

Mol. Weight 150.51

Purity $\geq 90\%$, $\geq 95\%$ (GCMS), as required by customer

$\lambda_{Abs.}$

λ_{PL}

